

Tiger Mono-facial 355-375 Watt

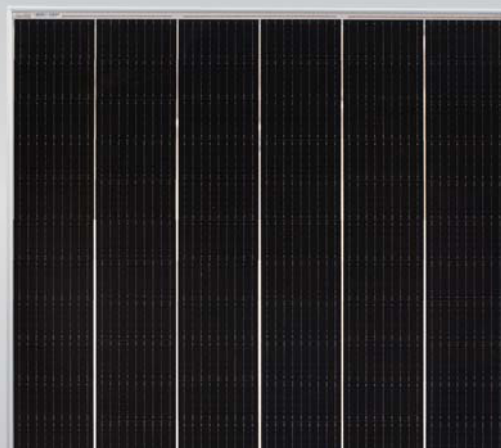
Tiling Ribbon (TR) Technology

Positive power tolerance of 0~+3%

ISO9001:2015, ISO14001:2015, ISO45001:2018
certified factory

IEC61215 (2016), IEC61730 (2016) certified product

(Made in China/Malaysia/U.S/Vietnam)



KEY FEATURES



TR technology + Half Cell

TR technology with Half cell aims to eliminate the cell gap to increase module efficiency (mono-facial up to 20.96%)



Low Light Induced Degradation

The N-type cell shows extremely low light induced degradation (LID) performance when comparing with the P-type cell.



9BB instead of 5BB

9BB technology decreases the distance between bus bars and finger grid line which is benefit to power increase.



Higher lifetime Power Yield

1% first year degradation,
0.4% linear degradation



Best Warranty

15 year product warranty,
30 year linear power warranty

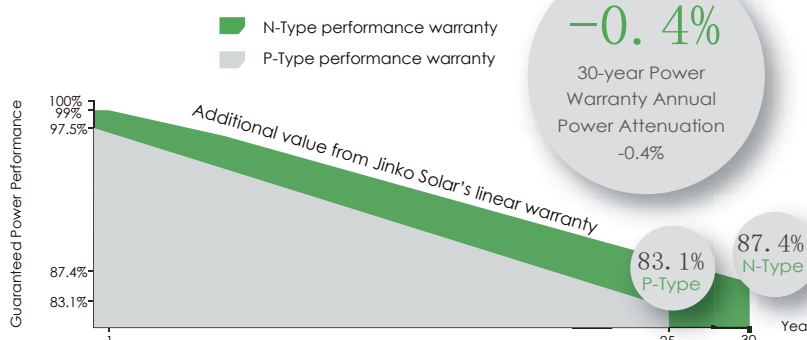


Better low-light performance

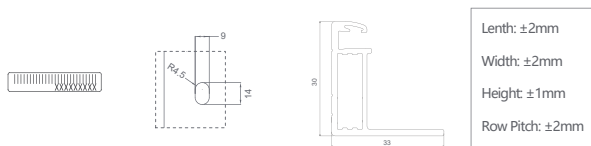
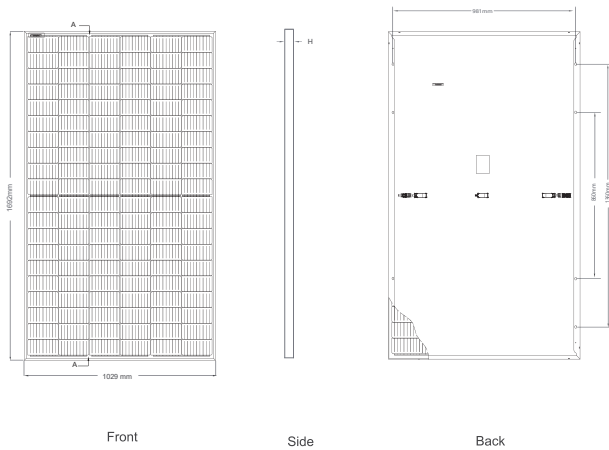
Excellent performance in low-light environments
(e.g. early morning, dusk, and cloud, etc.)

LINEAR PERFORMANCE WARRANTY

15 Year Product Warranty 30 Year Linear Power Warranty
0.4% Annual Degradation Over 30 years



Engineering Drawings

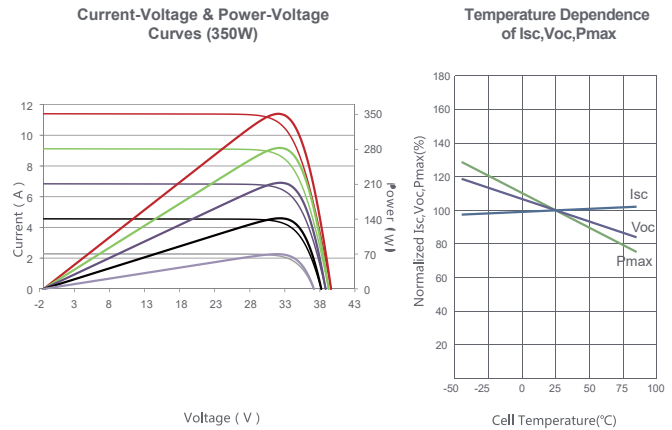


Packaging Configuration

(Two pallets = One stack)

35pcs/pallets, 70pcs/stack, 910pcs/ 40'HQ Container

Electrical Performance & Temperature Dependence



Mechanical Characteristics

Cell Type	N type Mono-crystalline
No. of cells	120 (2×60)
Dimensions	1692×1029×30mm (66.61×40.51×1.18 inch)
Weight	19.3 kg (42.55 lbs)
Front Glass	3.2mm, Anti-Reflection Coating, High Transmission, Low Iron, Tempered Glass
Frame	Anodized Aluminium Alloy
Junction Box	IP67 Rated
Output Cables	TUV 1×4.0mm ² (+): 290mm, (-): 145 mm or Customized Length
Connector	JK03M/1B, Genuine MC4
Fire rating	Class C

SPECIFICATIONS

Module Type	JKM355N-6TL3		JKM360N-6TL3		JKM365N-6TL3		JKM370N-6TL3		JKM375N-6TL3	
	STC	NOCT	STC	NOCT	STC	NOCT	STC	NOCT	STC	NOCT
Maximum Power (Pmax)	355Wp	265Wp	360Wp	268Wp	365Wp	272Wp	370Wp	276Wp	375Wp	280Wp
Maximum Power Voltage (Vmp)	34.04V	31.40V	34.19V	31.58V	34.34V	31.72V	34.49V	31.88V	34.63V	32.03V
Maximum Power Current (Imp)	10.43A	8.43A	10.53A	8.50A	10.63A	8.58A	10.73A	8.65A	10.83A	8.73A
Open-circuit Voltage (Voc)	41.01V	38.71V	41.16V	38.85V	41.31V	38.99V	41.46V	39.13V	41.60V	39.26V
Short-circuit Current (Isc)	11.13A	8.99A	11.23A	9.07A	11.33A	9.15A	11.43A	9.23A	11.53A	9.31A
Module Efficiency STC (%)	20.38%		20.66%		20.95%		21.24%		21.53%	
Operating Temperature(°C)	-40°C~+85°C									
Maximum system voltage	1000VDC (IEC)									
Maximum series fuse rating	20A									
Power tolerance	0~+3%									
Temperature coefficients of Pmax	-0.34%/°C									
Temperature coefficients of Voc	-0.28%/°C									
Temperature coefficients of Isc	0.048%/°C									
Nominal operating cell temperature (NOCT)	45±2°C									

* STC: Irradiance 1000W/m² Cell Temperature 25°C

AM=1.5

NOCT: Irradiance 800W/m² Ambient Temperature 20°C

AM=1.5

Wind Speed 1m/s

*Power measurement tolerance: +/-3%